

FactoryTalk® View Machine Edition

Versatile Machine-Level HMI Providing Software Flexibility

FactoryTalk® View Machine Edition (ME) software is a versatile HMI application that provides a dedicated and powerful solution for machine-level operator interface devices. As an integral element of the Rockwell Automation® visualization solution, FactoryTalk View Machine Edition provides superior graphics, runtime user management, language switching and faster commissioning time to Rockwell Automation terminal- or PC-based applications.



Features and Benefits

Premier integration with Logix controllers

- No need to create and maintain a separate HMI tag database – define tags once in the Logix controller, then access them throughout your system
- Language switching happens in the controller with no import/export necessary

Productivity and Compliance

- Save design and troubleshooting time with rich, reusable graphics and animation capabilities, global objects and a library of faceplates that show status and diagnostic information
- Save commissioning time by emulating the application on the design workstation
- Design time language switching delivers the ability to configure multiple languages that easily switch at runtime
- Build solutions that enable an application to meet validation requirements by using secured change control and an operator audit trail

Platform Support

- Operating systems include Microsoft® Windows 10, Windows 8, Windows 7 and more
- Supports PanelView™ Plus 6, PanelView™ Plus 7, MobileView™ and ME Station running on an industrial computer
- Legacy products can be easily upgraded to the latest FactoryTalk® View ME version

Mobility

- Access your plant floor terminal from anywhere at any time with virtual network computing (VNC)
- Extend your applications to your favorite iOS or Android mobile device for improved real-time decision making using FactoryTalk® ViewPoint
- Publish HMI screens as-is or create mobile device-specific screens with FactoryTalk ViewPoint for better visibility on a smaller screen

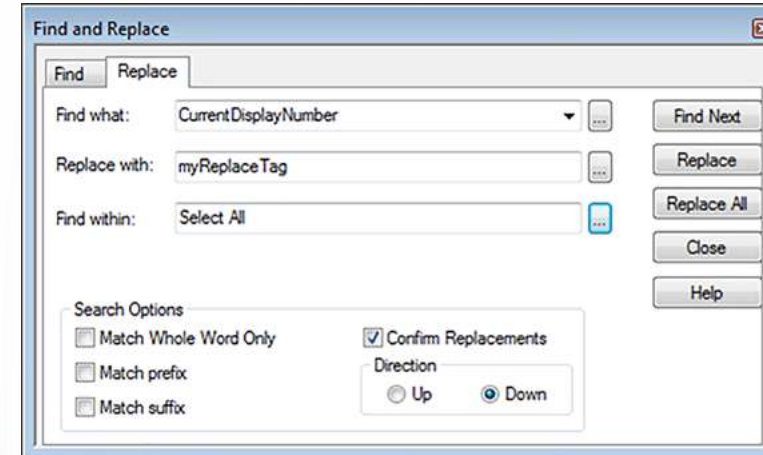
LISTEN.
THINK.
SOLVE.

Engineering and Maintenance

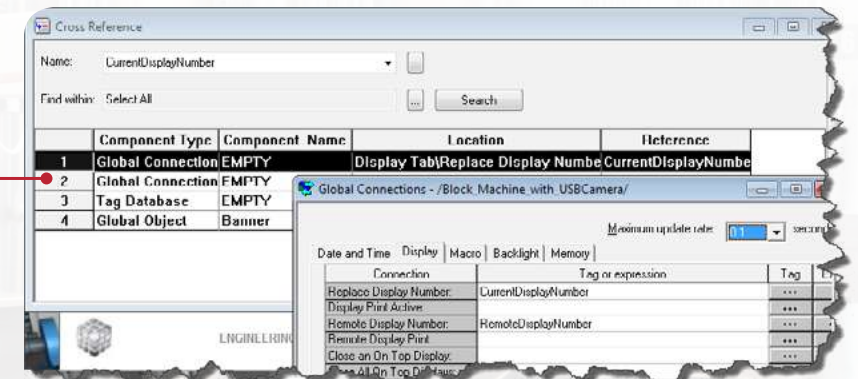
Delivering tools to quickly develop applications and easily maintain systems

REDUCE DESIGN AND COMMISSIONING TIME

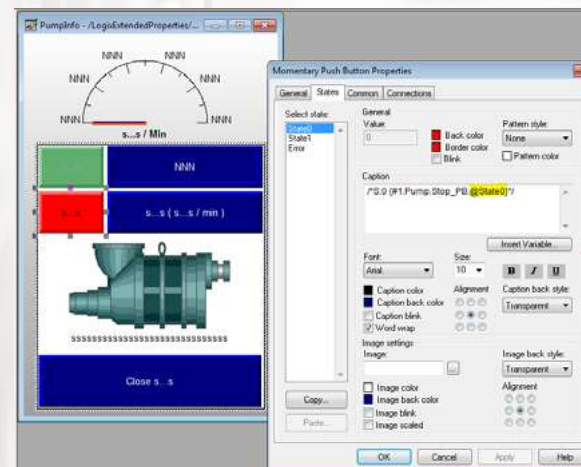
- Common installation process for Logix Designer, View Designer and FactoryTalk® View interfaces
- Extended tag properties with translated text exist in the controller and can be accessed by the HMI, helping to reduce duplication errors and streamline the design
- Find and Replace function provides an efficient way to update within a project
- Cross Reference capability generates a list of tag reference locations in a project with a hot link to jump to each specific location
- Design time language switching simplifies commissioning time, enabling you to quickly verify the localized content on your displays
- Global Objects allow you to create a core set of graphic functionality that can be reused on multiple graphic displays or use multiple instances on one graphic display
- Emulation mode allows applications to be tested on a PC device before downloading to a terminal
- Utilizes CSV import/export of Data Model configuration
- Imports many legacy applications



Save time by managing text and tag changes for multiple projects.



Cross Reference table generates hot linked tag references.



Save design time by utilizing extended tag properties in the controller, mitigating the need to create tag-defining features in the HMI.

Operations

Delivering robust products that have easy to understand display screens, quick access to alarming and system-wide diagnostics.

EXPAND MACHINE FLEXIBILITY AND CAPABILITY

- Data logging enables you to capture historical process data, which can then be displayed on a trend along with real-time data, giving operators an overview of operational data
- Increase efficiency by easily downloading consistent machine setup or product recipe information using the recipe function
- Connects to both Rockwell Automation® and non-Rockwell Automation devices
- Up to five displays can be launched at startup, giving operators access to all the information they need with a flexible interface design
- Language switching allows operators and maintenance personnel to quickly switch the HMI screen to their native language, reducing training, downtime and troubleshooting time
- Alarm Identifiers allow an application to provide additional information for an alarm by displaying videos or PDF files for the operator based on the specific alarm they are viewing
- Built-in keyboard, keypad and character input interfaces are customizable to match preferred color schemes for an organization, giving operators a consistent user interface
- Onboard audit trail and user verification with electronic signature records let you manage change and comply with regulations

Display contextual troubleshooting information such as machine drawings or manuals with specific alarms.

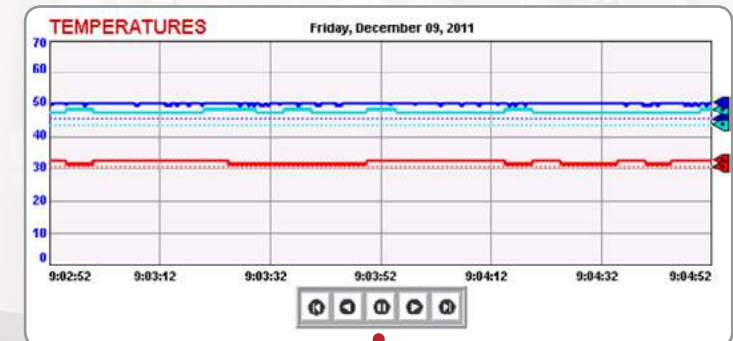
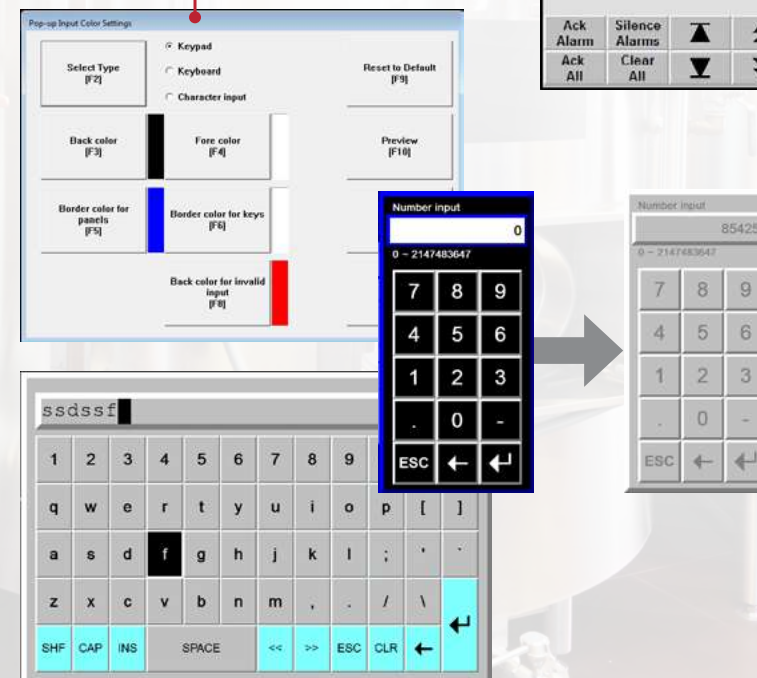
| Alarm time | Acknowledge time | Message |
|---------------------|---------------------|---------------------------------------|
| 2/6/2018 1:50:16 PM | 2/6/2018 1:50:11 PM | Motor approaching over temp condition |
| 2/6/2018 1:49:26 PM | | Motor fault |
| 2/6/2018 1:49:21 PM | | Puley assembly fault |
| 2/6/2018 1:49:16 PM | | Motor overload |
| 2/6/2018 1:49:14 PM | | Motor approaching over temp condition |
| 2/6/2018 1:42:48 PM | | Motor fault |
| 2/6/2018 1:42:48 PM | | Headstock assembly error |
| 2/6/2018 1:42:48 PM | | Pinion failure, major fault |
| 2/6/2018 1:42:48 PM | | Puley assembly fault |

Fault in the machine motor. Check the motor starter for overload condition. Check 3-phase power to motor starter.

Alarm Context Id: 10

Ack Alarm, Silence Alarms, Ack All, Print History, Alarm Status Sort Alarms, Hide Alarm Context, Show Alarm Detail, Close

Customize keyboard interfaces to better match the color scheme of the application.



Log application data for extended periods. Supports up to 1,000,000 records.

Graphic Terminals

Directly access non-controller devices as data sources to improve communications, timing and production

PanelView Plus has built-in device level ring (DLR) Ethernet capabilities and resistive touch screen.



MobileView™ Tethered Operator Terminals put the view of your application in your hands.



PanelView Plus Standard offers device level ring (DLR) as an option.

Onboard audit trail and user verification with electronic signature records let you manage change and comply with regulations.

Extending Your HMI

Delivering anytime, anywhere access to contextualized manufacturing data for more informed, faster business decisions.

MAKE YOUR HMI MOBILE

FactoryTalk® ViewPoint allows you to view and interact with your terminal-based FactoryTalk View Machine Edition (ME) applications from a web browser or your favorite mobile device, providing continuous system visibility and improving real-time decision-making. Factory Talk ViewPoint delivers:

- A truly interactive web-based HMI experience without requiring any additional development
- Configurable security to provide users with read-only or read-write access
- Real-time trending
- A maintenance free, browser-based client with no additional software to install and configure
- Support for Windows, iOS and Android with HTML 5 rendering
- Option to develop alternate mobile displays allows different users, such as operators and plant management accessing the same terminal via a mobile device, to view information that is relevant to them

For More Information

View the *Make Your HMI Mobile* video or go to <http://bit.ly/1LSppAn>



FactoryTalk® ViewPoint is included with PanelView Plus firmware.

Compatible with PanelView Plus 6/7 Standard and Performance form factors.



No license or FactoryTalk Activation required.

Supports a single client connection.

More Information

Visit us at:

<http://www.rockwellsoftware.com>

View the *Make Your HMI Mobile* video

Learn more about *Designing for Mobility*

Product Compatibility and Download Center

Check out the latest HMI news from Rockwell Automation

Ordering Information

Contact your local Rockwell Automation sales office or Allen-Bradley distributor.

Allen-Bradley, LISTEN. THINK. SOLVE., FactoryTalk, MobileView, PanelView, Rockwell Software, RSLogix and PlantPAx are trademarks of Rockwell Automation, Inc. All other trademarks and registered trademarks are the property of their respective owners.

www.rockwellautomation.com

Power, Control and Information Solutions Headquarters

Americas: Rockwell Automation, 1201 South Second Street, Milwaukee, WI 53204-2496 USA, Tel: (1) 414.382.2000, Fax: (1) 414.382.4444

Europe/Middle East/Africa: Rockwell Automation NV, Pegasus Park, De Kleetlaan 12a, 1831 Diegem, Belgium, Tel: (32) 2 663 0600, Fax: (32) 2 663 0640

Asia Pacific: Rockwell Automation, Level 14, Core F, Cyberport 3, 100 Cyberport Road, Hong Kong, Tel: (852) 2887 4788, Fax: (852) 2508 1846

Publication FTALK-PP012G-EN-P – February 2018
Supersedes Publication FTALK-PP012F-EN-P – May 2017

Copyright © 2018 Rockwell Automation, Inc. All Rights Reserved. Printed in USA.